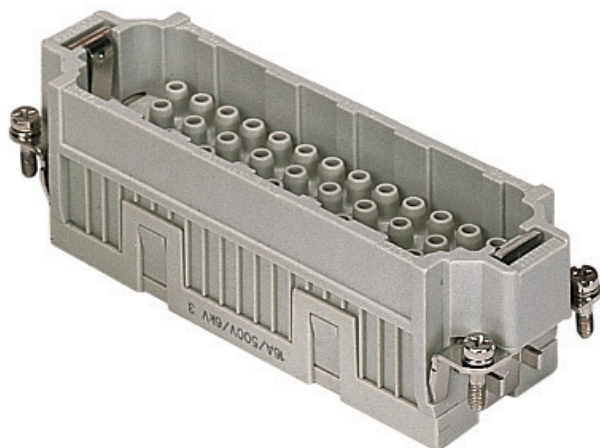



## Product Sheet

**Part Number:** CQEM 46 N



<b>Family</b>	inserts
<b>Version</b>	crimp connections
<b>Series</b>	CQE
<b>Product type</b>	for male contacts 16A
<b>Model</b>	male insert
<b>Reference standard</b>	EN 61984 (2001-11)
<b>No. of poles</b>	92 poles + $\perp$ (46 poles + $\perp$ , No. 47 - 92)
<b>Voltage (V)</b>	500V
<b>Current (A)</b>	16A (A.C./D.C.)
<b>Quality mark</b>	
<b>IP degree of protection</b>	IP20 degree of protection without enclosure, IP65/IP66 with enclosure (EN 60529)
<b>Fixing centre distance</b>	size "104.62" Double-size enclosures 104.62 accept two complementary inserts, order the standard insert and corresponding N insert for making the total polarity
<b>Impulse withstand voltage</b>	6kV

The information and the dimensions contained are not binding and may be changed without prior notice.  
The drawing's dimensions are in mm.

Pollution degree

3

Notes



CQEF/M 46 N inserts:

- characteristics according to EN 61984:
  - (16A 500V 6kV 3)
  - (16A 830V) 8kV 2)
- rated voltage according to UL/CSA: 600V
- insulation resistance: > 10 GOhm
- ambient temperature limit: -40 °C ... +125 °C
- are made of self-extinguishing thermoplastic resin  
UL 94 V0
- mechanical life: > 500 cycles
- contact resistance: < 1 mOhm
- for contact crimping instructions, please see the crimping tool section (16A contacts, CCF, CCM and CC...AN series) .
- enclosures: size "104.62":
  - C-TYPE IP65/IP66
  - C7 IP67 stainless steel lever
  - V-TYPE IP65/IP66
  - stainless steel lever
  - T-TYPE IP65 insulating
  - JEI zinc-plated steel lever
  - BIG hoods
  - W-TYPE aggressive environments
  - EMC
  - central lever
  - IP68
- panel supports: page: COB

The information and the dimensions contained are not binding and may be changed without prior notice.  
The drawing's dimensions are in mm.